

27 JAN 22

**EGVH AD 3.1 - HELIPORT LOCATION INDICATOR AND NAME**

EGVH - HEREFORD

**EGVH AD 3.2 - HELIPORT GEOGRAPHICAL AND ADMINISTRATIVE DATA**

1	ARP Co-ordinates and site at AD:	N52 04 51-08 W002 47 56-39 (OSGB36-SO454428)
2	Direction and distance from City:	4 km NW of Hereford.
3	Elevation/Reference Temperature:	240ft / -
4	Magnetic Variation / Annual Change:	1-14°W (2019) / 0-20°E
5	Geoid Undulation at AD Elev Position:	----
6	AD Administration: Address:  Telephone:  Fax:  E-mail: Web site:	Operations Mailpoint 520 Hereford Herefordshire HR4 7DD  Civ: 01432 357311 Ext 2369 / 2724 Mil: 94475 2369 / 2724 Civ: 01432 357311 Ext 2371 Mil: 94475 2371 Nil. Nil.
7	Types of Traffic Permitted (IFR/VFR):	VFR
8	Remarks:	Strictly PPR only - No practice approaches. Lies within D216, PPR to be requeuested 72 hrs in advance.

**EGVH AD 3.3 - OPERATIONAL HOURS**

1	Heliport Operator:	MOD.
2	Customs and Immigration:	Nil.
3	Health and Sanitation:	Nil.
4	AIS Briefing Office:	HO (self briefing only).
5	ATS Reporting Office (ARO):	HO.
6	MET Briefing Office:	Nil.
7	ATS:	HO.
8	Fuelling:	Military emergency only.
9	Handling:	Nil.
10	Security:	MOD Police.
11	De-Icing:	Nil.
12	Remarks:	Strictly PPR only - No practice approaches. OOH call Duty Pilot.

**EGVH AD 3.4 - HANDLING SERVICES AND FACILITIES**

1	Cargo Handling Facilities:	Nil.
2	Fuel and Oil Types:	F34.
3	Fuelling Facilities and Capacity:	Military Emergency fuel only.
4	De-Icing Facilities:	Nil.
5	Hangar space for visiting helicopter:	Nil.
6	Repair facilities for visiting helicopter:	Nil.
7	Remarks:	Strictly PPR only - No practice approaches.

27 JAN 22

**EGVH AD 3.5 - PASSENGER FACILITIES**

1	Accommodation / hotel(s) at or in the vicinity:	Nil.
2	Restaurant(s) at or in the vicinity:	Nil.
3	Transportation possibilities:	Nil.
4	Medical Facilities:	Nil.
5	Bank and Post Office at or in the vicinity:	Nil.
6	Tourist Office:	Nil.
7	Remarks:	Strictly PPR only.

**EGVH AD 3.6 - RESCUE AND FIRE FIGHTING SERVICES**

1	Heliport Category for Fire Fighting:	ICAO Cat 4.
2	Rescue Equipment:	As required for ICAO Cat 4.
3	Capability for removal of disabled helicopter:	Nil.
4	Remarks	Defence fire service on call.

**EGVH AD 3.7 - SEASONAL AVAILABILITY - CLEARING**

1	Type of Clearing equipment:	Nil.
2	Clearance priorities:	Nil.
3	Remarks:	Nil.

**EGVH AD 3.8 - APRONS, TAXIWAYS AND CHECK LOCATIONS/POSITIONS DATA**

1	Helicopter Stands:	<b>Stand Designation</b>	<b>Surface</b>	<b>Strength of Apron</b>
		Dispersal 180 x 30m	Concrete	Unknown.
2	Helicopter ground taxiway designation, width, surface and strength:	<b>Taxiway Designation</b>	<b>Width</b>	<b>Surface Type</b>
		N/A	-	-
3	Helicopter Air Taxiway and Air Transit Route, width and designation:	<b>Designation</b>	<b>Width</b>	
		N/A	N/A	
4	Altimeter Checkpoint(s) Location and Elevation:	N/A		
5	Location of VOR Checkpoints:	Nil.		
6	INS Checkpoints:	Nil.		
7	Remarks:	Nil.		

**EGVH AD 3.9 - MARKINGS AND MARKERS**

1	Final approach and take-off markings:	080°/260° FATO with two white H.
2	Taxiway, air taxiway and air transit route markers:	Nil.
3	Remarks:	Nil.

**EGVH AD 3.10 - HELIPORT OBSTACLES**

Please refer to the "Measured Height Survey" data on the UK Mil AIP website [www.aidu.mod.uk/aip](http://www.aidu.mod.uk/aip).

See AD 3.19 Local Heliport Regulations - Warnings, for additional hazards at location.

27 JAN 22

EGVH AD 3.11 - METEOROLOGICAL INFORMATION		
1	Associated MET Office:	MET Office DGU South.
2	Hours of service: MET Office outside hours:	H24.
3	Office responsible for TAF information: Periods of validity:	N/A
4	Type of landing forecast: Interval of issuance:	N/A
5	Briefing/consultation provided:	N/A
6	Flight documentation: Language(s) used:	N/A
7	Charts and other information available for briefing or consultation:	N/A
8	Supplementary equipment available for providing information:	N/A
9	ATS units provided with information:	Nil.
10	Additional information (limitation of services etc):	Nil.
11	Remarks:	Nil.

EGVH AD 3.12 - HELIPORT DATA					
Designation & Heliport Type	TLOF Area Dimensions (m)	FATO True Bearings	FATO Dimensions & Surface Type	TLOF Surface & Bearing Strength (1,000kg)	Coordinates of TLOF geometric centre or each Thld of FATO.
1	2	3	4	5	6
08	Not Known	080°00'22" GEO 081°32'22" MAG	150m x 20-6m	Not Known	N52 04 50-66 W002 48 00-26
26	Not Known	260°00'28" GEO 261°32'28" MAG	150m x 20-6m	Not Known	N52 04 51-50 W002 47 52-51
TLOF and/or FATO slope & Elevation	Dimensions of Safety Area (m)	Dimensions of Helicopter Clearway (m)	Obstacle Free Sector Information		
7	8	9	10		
08 - 238-25ft	Not Known	Not Known	Not Known		
26 - 236-06ft	Not Known	Not Known	Not Known		
11	Remarks		Nil.		

EGVH AD 3.13 - DECLARED DISTANCES					
Declared Distance	TORAH (m)	TODAH (m)	LDAH (m)	Remarks	
1	2	3	5	6	
150	150	150	150	Nil.	

EGVH AD 3.14 - APPROACH AND FATO LIGHTING				
Designator	Approach lighting System Type Length & Intensity	FATO area lighting characteristics and location	Aiming point lighting characteristics and location.	TLOF lighting system characteristics and location
1	2	3	4	5
08/26	Not Known	White ground level lights surround FATO	Approach lights 08/26	N/A
6	Remarks:		Blue ground level lights surround dispersal (Lights controlled by Ops)	

27 JAN 22

**EGVH AD 3.15 - OTHER LIGHTING, SECONDARY POWER SUPPLY**

1	Heliport BCN location, characteristics and hours of operation:	Nil.
2	WDI location and lighting:	Nil.
3	TWY edge and centre line lighting:	Nil.
4	Secondary power supply: Switch-over time:	Nil.
5	Remarks:	Nil.

**EGVH AD 3.16 - ATS AIRSPACE**

Designation and lateral limits		Vertical limits	Airspace Classification
1		2	3
EG D216 Credenhill A circle, 2 NM radius, centred at 52 04 53N 002 48 06W		Upper limit: 2300 ft ALT Lower limit: SFC	Danger Area
4	ATS Unit Callsign: Language:	No ATS. -	
5	Transition Altitude:	3000ft.	
6	Hours of applicability:	H24.	
7	Remarks:	EG D216 - Vertical Limits: OCNL notified to ALT 10000. Activity: Para Dropping / Ordnance, Munitions and Explosives. Service: DAAIS: London Information on 124.750 MHz. Danger Area Authority: HQ Land. Hours: H24	

**EGVH AD 3.17 - ATS COMMUNICATION FACILITIES**

Service Designation	Callsign	Channels	SATVOICE Number	Hours of Operation		Remarks
				Winter	Summer	
1	2	3	4	5		6
-	Hereford Ops	251.1 (P) 134.15 (S)	-	H24	H24	No ATC available.
RAD	Gloster Radar	128.555 120.980	-	-	-	

**EGVH AD 3.18 - RADIO NAVIGATION AND LANDING AIDS**

Type Category (Variation)	Ident	Frequency	Hours of Operation		Antenna Site co-ordinates	Elevation of DME Transmitting antenna	Remarks
			Winter	Summer			
			# and by arrangement				
1	2	3	4		5	6	7
Nil.	-	-	-	-	-	-	-
Remarks: Nil.							

27 JAN 22

## EGVH AD 3.19 - LOCAL HELIPORT REGULATIONS

1	<b>Helicopter regulations</b> a. Strictly PPR only - No practice approaches.
2	<b>Ground Movement</b> a. Land and shutdown only on areas designated by Hereford Ops.
3	<b>Warnings</b> a. Helicopter with D216 - Strictly PPR no practice approaches.  b. Hazards: i. Aerial farm 150m x 150m (50ft) 50m SE. ii. Hangars (40ft) 60m North. iii. Rugby posts (30ft) 200m West. iv. Aerials (up to 100ft) 100m SW, 450m NE and 550m NNE. v. Fuel compound (15ft) on North edge of dispersal. vi. Free fall para up to FL150 - by NOTAM. vii. Light stanchions (30ft) 50m on corners of dispersal. viii. ISO containers by hangar 60m North. ix. Football goalposts 100m South.
4	<b>Training</b> No practice approaches.

## EGVH AD 3.20 - NOISE ABATEMENT PROCEDURES

Avoid stables at grid SO449428.
---------------------------------

## EGVH AD 3.21 - FLIGHT PROCEDURES

1	TLOF area(s) and associated equipment authorized for use under low visibility procedures:	Nil.
2	Defined MET conditions under which initiation, use and termination of low visibility procedure would be made:	N/A
3	Description of ground marking/lighting for use under low visibility procedures:	N/A
4	Remarks:	Contact 658 Sqn Ops prior to arrival/departure for Air System movements update.

## EGVH AD 3.22 - ADDITIONAL INFORMATION

<b>Alternative site:</b> Lillypads in open area at grid SO45434313. Antenna (20ft) 80m North. Mast (60ft) 190m NE. Vehicle park 50m North. Ammo bunker 85m South.
---

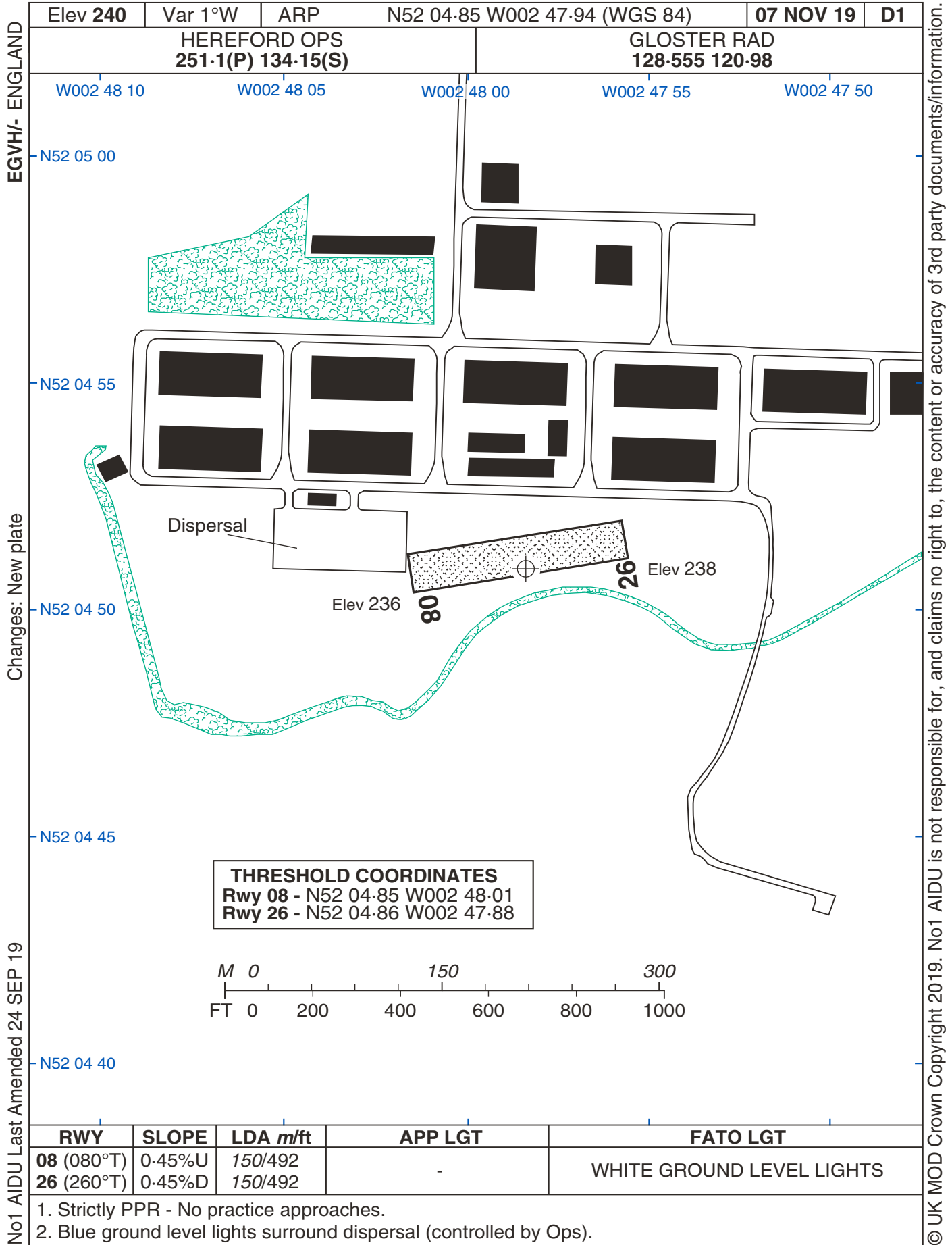
## EGVH AD 3.24 - CHARTS RELATING TO THIS HELIPORT

Terminal Charting		En-Route Charting
D1	Aerodrome	UK(L)1
L1	Copter RNP APCH 263°	UK(L)2
L2	IAP Coding Table	
L3	IAP Coding Table	

INTENTIONALLY BLANK

**AERODROME**

**HEREFORD**

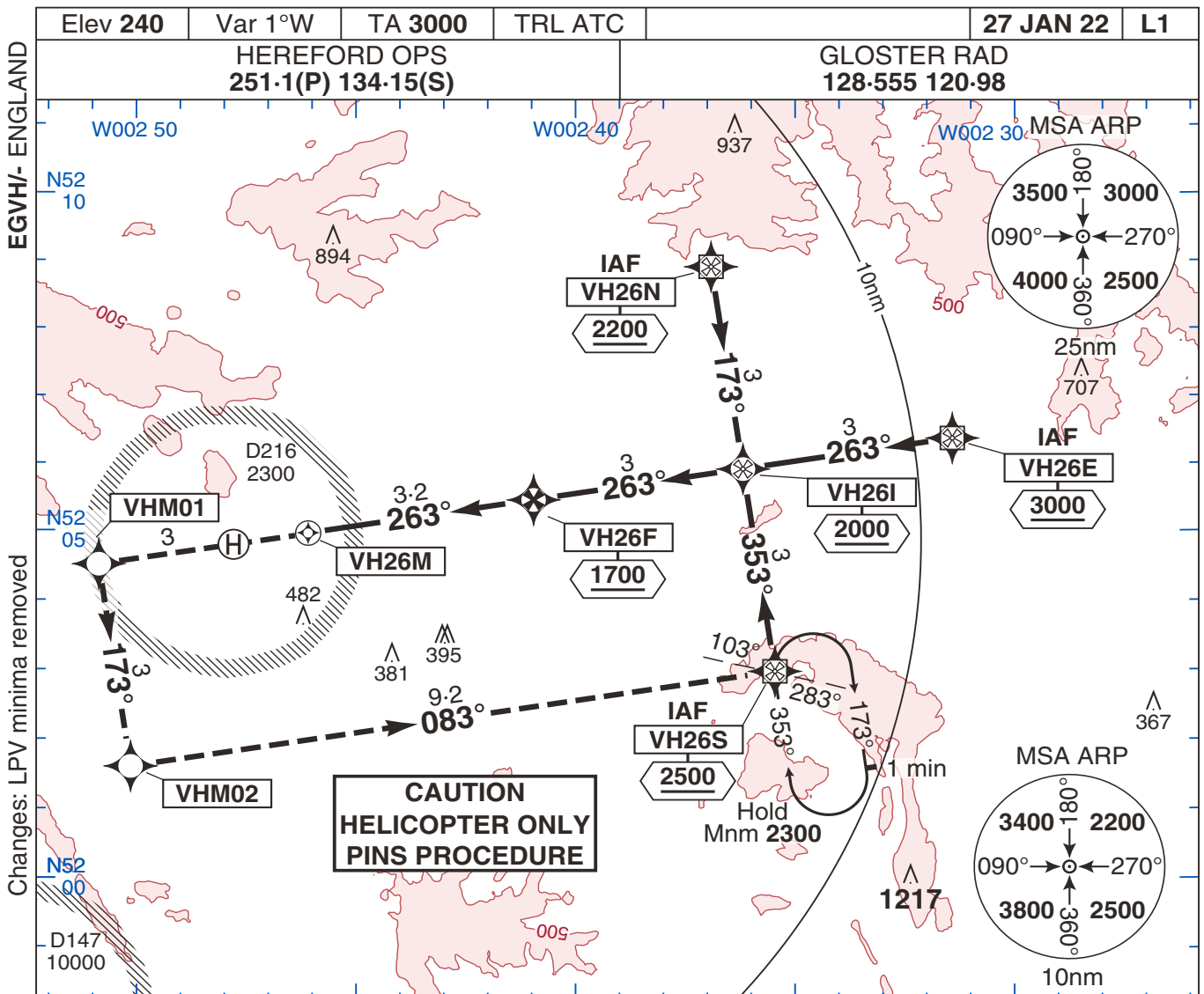


**HEREFORD**

**AERODROME**

# COPTER RNP APCH 263°

# HEREFORD



MIPS	H	650 420	N/A	1. <b>CAUTION.</b> Proceed VFR procedure. VFR must be established at the latest by VH26M.								NM to	ALT
				2. Strictly PPR.								VH26M	HGT
				3. PINS to Landing Area 1961m.								3	1620
												2	1230
												1	860
													630
GS (kt)	50	60	70	80	90	100	110	120					
FAF-MAPt	3.2nm	3:50	3:12	2:45	2:24	2:08	1:55	1:44	1:36				
ROD (fpm)	3.5°	310	370	430	500	560	620	680	740				

## HEREFORD

## COPTER RNP APCH 263°

MIPS

© UK MOD Crown Copyright 2022. No1 AIDU is not responsible for, and claims no right to, the content or accuracy of 3rd party documents/information.



**IAP CODING TABLE**

**HEREFORD**

Elev 240	Var 1°W	TA 3000	TRL ATC		07 NOV 19	L2
----------	---------	---------	---------	--	-----------	----

EGVH/- ENGLAND

**EGVH RNAV (GNSS) PinS 263 Instrument Approach Procedure via VH26N**

Desig	Seq Nbr	Path Terminator	WPt Name	Fly-over	Course/Track °M (°T)	Turn Direction	Level Constraint	Speed Constraint	Co-ordinates	Rmks and Dist to
263R	001	IF	VH26N	-	-	-	2200	120	N520853.37 W0023653.55	IAF
263R	002	TF	VH26I	-	173°M (171.64°T)	Right	2000	-	N520555.50 W0023611.10	IF/ 6.2nm
263R	003	TF	VH26F	-	263°M (261.65°T)	-	1700	90	N520529.28 W0024059.85	FAF/ 3.2nm
263R	004	TF	VH26M	Y	263°M (261.59°T)	-	-	-	N520500.87 W0024610.62	MAPt
263R	005	TF	VHM01	-	263°M (261.58°T)	Left	-	-	N520434.47 W0025059.15	-
263R	006	TF	VHM02	-	173°M (171.51°T)	Left	-	-	N520136.47 W0025016.06	-
263R	007	TF	VH26S	-	083°M (081.46°T)	-	2500	120	N520257.67 W0023528.68	Hold

Changes: New Plate

**EGVH RNAV (GNSS) PinS 263 Instrument Approach Procedure via VH26E**

Desig	Seq Nbr	Path Terminator	WPt Name	Fly-over	Course/Track °M (°T)	Turn Direction	Level Constraint	Speed Constraint	Co-ordinates	Rmks and Dist to
263C	001	IF	VH26E	-	-	-	3000	120	N520621.75 W0023122.34	IAF
263C	002	TF	VH26I	-	263°M (261.63°T)	-	2000	-	N520555.50 W0023611.10	IF/ 6.2nm
263C	003	TF	VH26F	-	263°M (261.65°T)	-	1700	90	N520529.28 W0024059.85	FAF/ 3.2nm
263C	004	TF	VH26M	Y	263°M (261.59°T)	-	-	-	N520500.87 W0024610.62	MAPt
263C	005	TF	VHM01	-	263°M (261.58°T)	Left	-	-	N520434.47 W0025059.15	-
263C	006	TF	VHM02	-	173°M (171.51°T)	Left	-	-	N520136.47 W0025016.06	-
263C	007	TF	VH26S	-	083°M (081.46°T)	-	2500	120	N520257.67 W0023528.68	Hold

No1 AIDU Last Amended 24 SEP 19

© UK MOD Crown Copyright 2019. No1 AIDU is not responsible for, and claims no right to, the content or accuracy of 3rd party documents/information.

**HEREFORD**

**IAP CODING TABLE**

**IAP CODING TABLE**

**HEREFORD**

Elev 240	Var 1°W	TA 3000	TRL ATC		07 NOV 19	L3
----------	---------	---------	---------	--	-----------	----

EGVH/- ENGLAND

**EGVH RNAV (GNSS) PinS 263 Instrument Approach Procedure via VH26S**

Desig	Seq Nbr	Path Terminator	WPt Name	Fly-over	Course/Track °M (°T)	Turn Direction	Level Constraint	Speed Constraint	Co-ordinates	Rmks and Dist to
263L	001	IF	VH26S	-	-	-	2500	120	N520257.67 W0023528.68	IAF
263L	002	TF	VH26I	-	353°M (351.64°T)	Left	2000	-	N520555.50 W0023611.10	IF/ 6.2nm
263L	003	TF	VH26F	-	263°M (261.65°T)	-	1700	90	N520529.28 W0024059.85	FAF/ 3.2nm
263L	004	TF	VH26M	Y	263°M (261.59°T)	-	-	-	N520500.87 W0024610.62	MAPt
263L	005	TF	VHM01	-	263°M (261.58°T)	Left	-	-	N520434.47 W0025059.15	-
263L	006	TF	VHM02	-	173°M (171.51°T)	Left	-	-	N520136.47 W0025016.06	-
263L	007	TF	VH26S	-	083°M (081.46°T)	-	2500	120	N520257.67 W0023528.68	Hold

Changes: New Plate

No1 AIDU Last Amended 24 SEP 19

© UK MOD Crown Copyright 2019. No1 AIDU is not responsible for, and claims no right to, the content or accuracy of 3rd party documents/information.

**HEREFORD**

**IAP CODING TABLE**