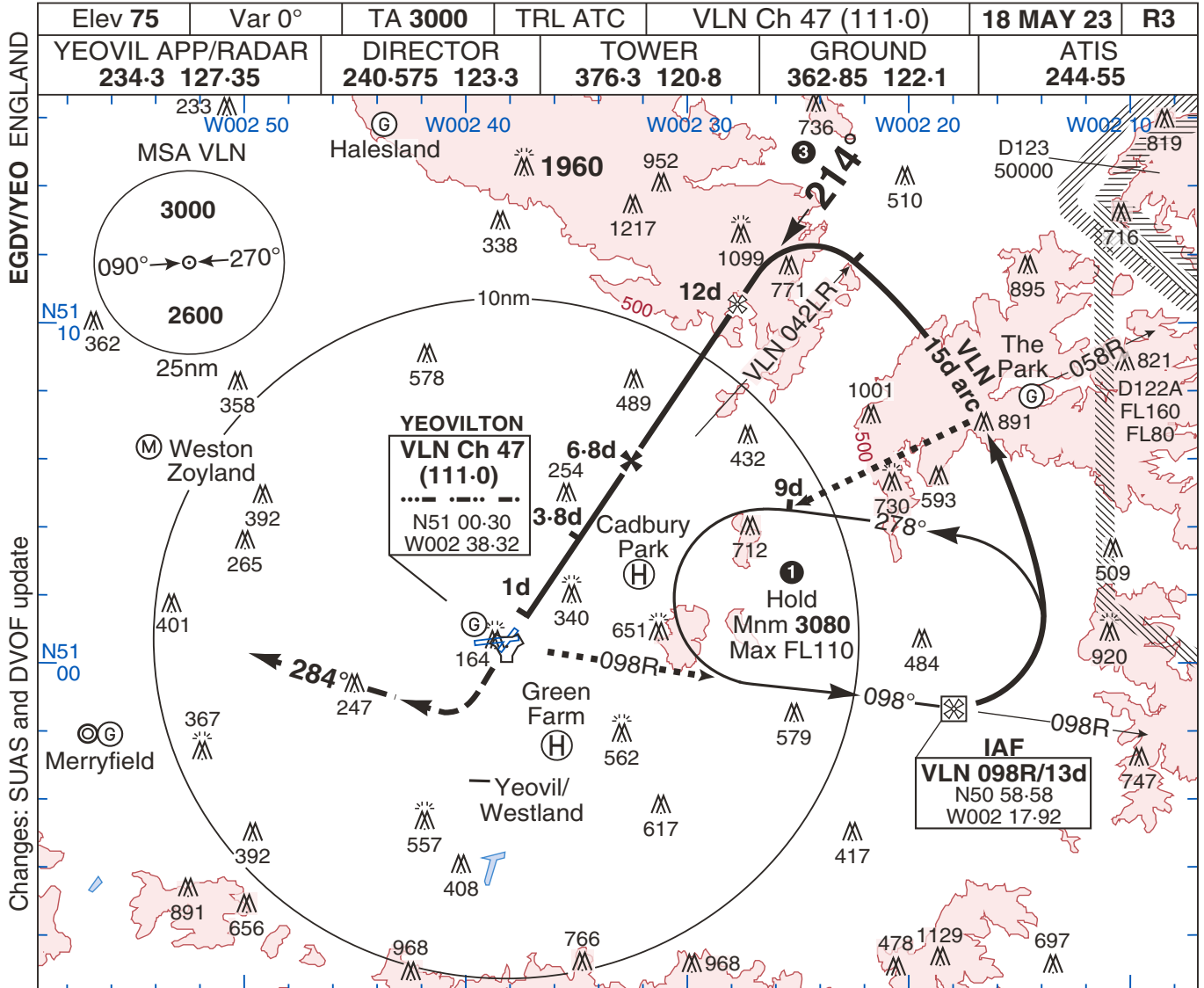


TAC Rwy 22

YEOVILTON



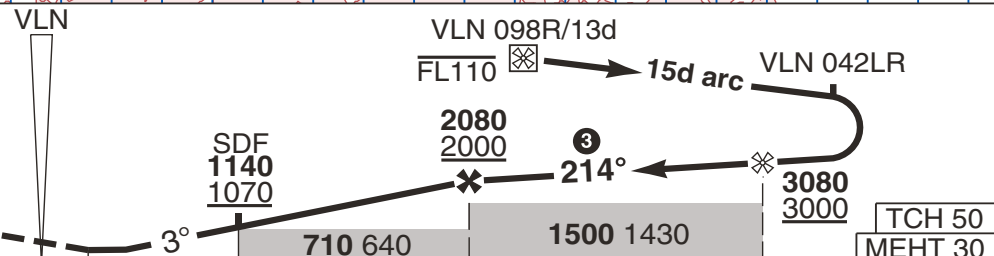
EGDY/YEO ENGLAND

Changes: SUAS and DVOF update

© UK MOD Crown Copyright 2023. No 1 AIDU is not responsible for, and claims no right to, the content or accuracy of 3rd party documents/information.

Ahead on Rwy Tr to 1080 1000, then right on Tr 284° and continue to 3080 3000 and call RADAR.

MAPt at 1d.



Rwy QFU 217°	THR Elev 69/2hPa	1	3.8	6.8	12	TCH 50	MEHT 30
						DME VLN	

CAT	TAC ②	CIRC
A	570 500 1500m	620 540 2300m
B		720 640 2300m
C		1050 970 2400m
D	570 500 1800m	1080 1000 3600m
E		1180 1100 3600m

- ① Hold entry restricted to along 098R oudb and along 058R/9d inbd to the end of the oudb leg. Do not exceed 058R in the hold.
- ② When ALS inop increase vis Cat AB by 800m, Cat CDE by 500m.
- ③ FAT offset 3° right of RCL.
4. Approaches co-ordinated with Yeovil/ Westland.
5. VLN reads 0-6d at THR.

DME VLN	ALT HGT
6	1840
5	1520
4	1200
4	1130
3	890
3	810

GS (kt)	80	120	150	180	210	
FAF-THR 5.8nm	4:21	2:54	2:19	1:56	1:39	
ROD (fpm)	3°	420	640	800	950	1110

YEOVILTON  
MIPS

TAC Rwy 22