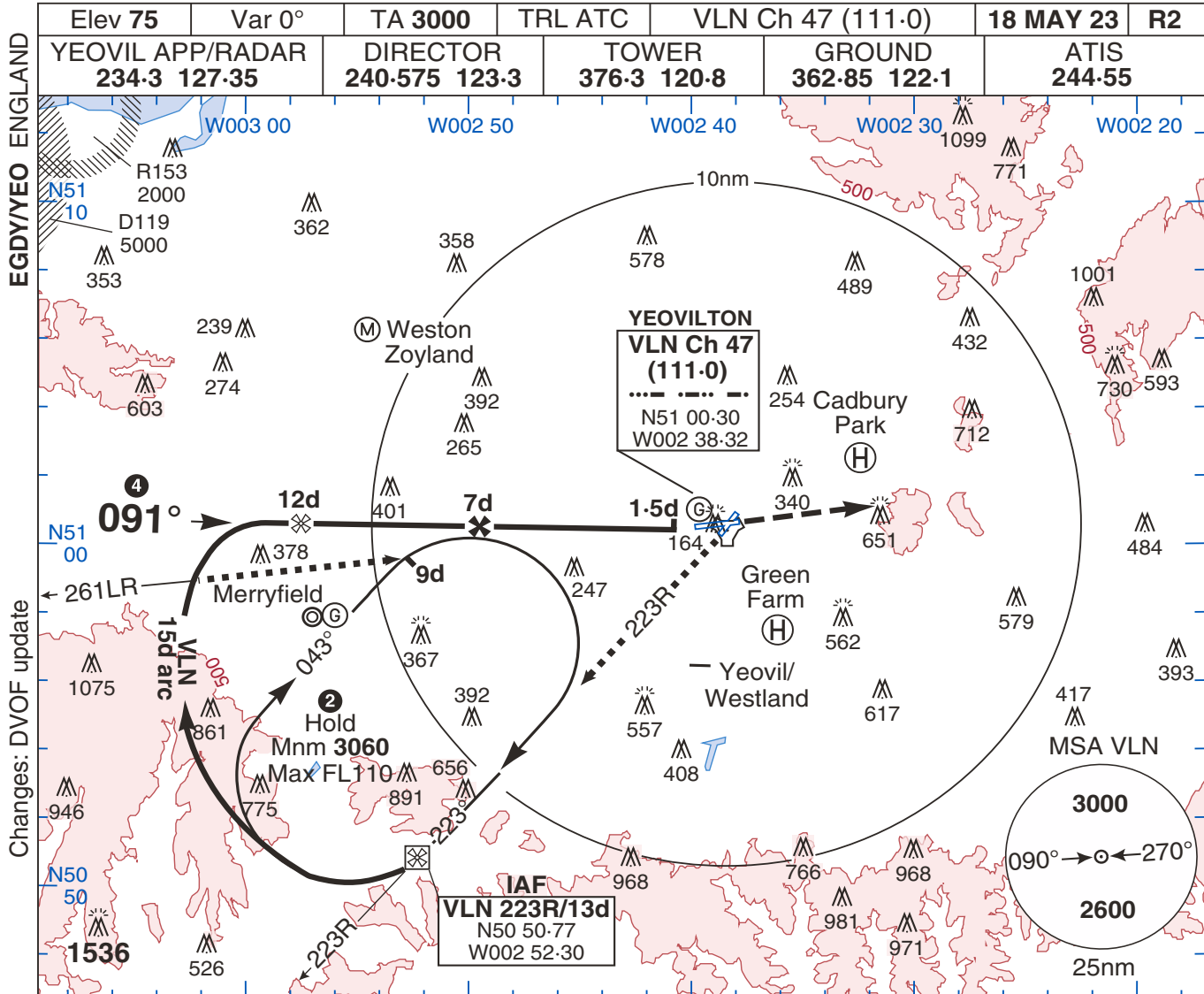


TAC Rwy 08

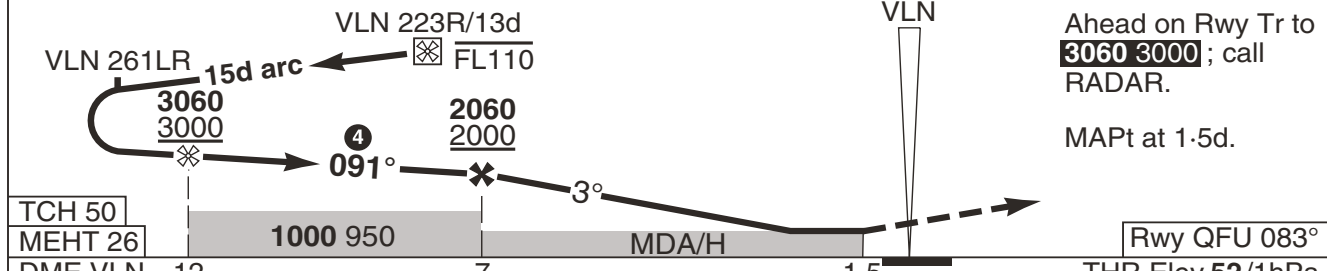
YEOVILTON



Changes: DVOF update

No 1 AIDU Last Amended 12 APR 23

© UK MOD Crown Copyright 2023. No 1 AIDU is not responsible for, and claims no right to, the content or accuracy of 3rd party documents/information.



TCH 50						Rwy QFU 083°	
MEHT 26	1000 950					THR Elev 52/1hPa	
DME VLN	12	7			1.5		
CAT	TAC ③	CIRC				1. CAUTION. Procedure hgt ref to THR Elev. ② Hold entry restricted to along 223R oubd and along 263R/9d inbd to the end of the oubd leg. Do not exceed VLN263R in the hold. ③ When ALS inop increase vis by 700m. ④ FAT offset 8° left of RCL. 5. Approaches co-ordinated with Yeovil/ Westland. 6. VLN reads 0-88d at THR.	
MIPS	A	430 370	620 540				
		1000m	1700m				
	B	440 380	720 640				
		1000m	1700m				
	C	470 410	1050 970				
	1200m	2400m					
D	490 430	1080 1000					
	1300m	3600m					
E	540 480	1180 1100					
	1500m	3600m					
GS (kt)	80	120	150	180	210		
FAF-THR	5.5nm	4:09	2:45	2:12	1:50	1:34	
ROD (fpm)	3°	420	640	800	950	1110	

YEOVILTON MIPS

TAC Rwy 08