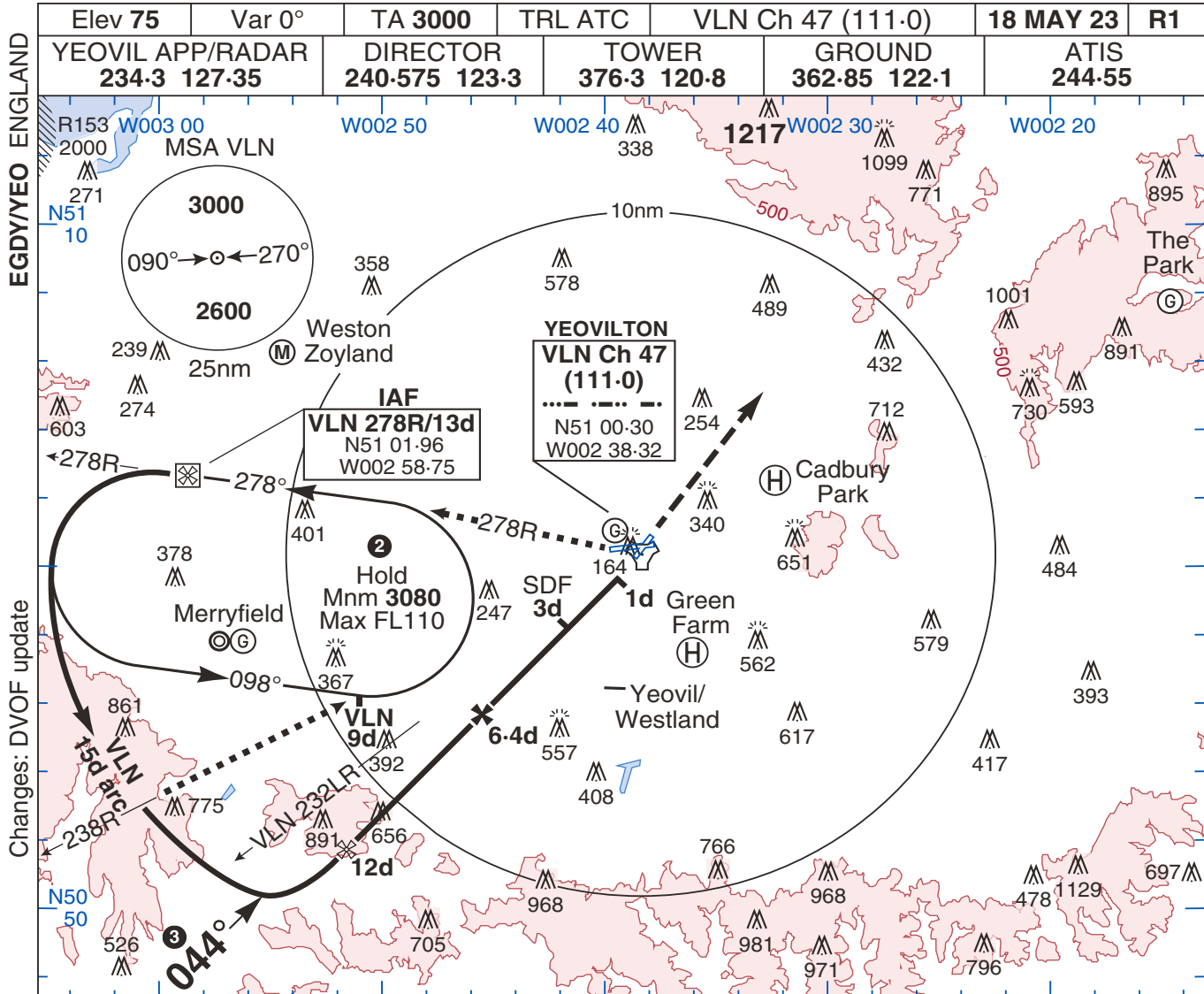


# TAC Rwy 04

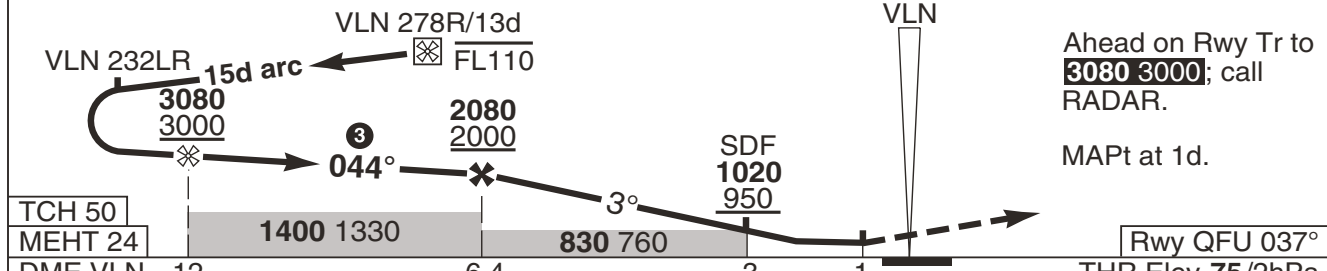
# YEOVILTON



Changes: DVOF update

No 1 AIDU Last Amended 12 APR 23

© UK MOD Crown Copyright 2023. No 1 AIDU is not responsible for, and claims no right to, the content or accuracy of 3rd party documents/information.



TCH 50	MEHT 24	1400 1330		830 760		Rwy QFU 037°	
DME VLN	12	6.4	3	1	THR Elev 75/2hPa		
<b>CAT</b>	<b>TAC 4</b>	<b>CIRC</b>		1. <b>CAUTION.</b> D012 within 6nm during inbound turn to IF.			
<b>A</b>	570 490	620	540	2. Hold entry restricted to along 278R oubd and along leg 238R/9d inbd to the end of the oubd leg. Do not exceed 238R in the hold.			
<b>B</b>	1500m	720	640	3. FAT offset 7° left of RCL.			
<b>C</b>	N/A	1050	970	4. When ALS inop increase vis Cat AB by 800m, Cat CDE by 500m.			
<b>D</b>		1080	1000	5. Approaches co-ordinated with Yeovil/ Westland.			
<b>E</b>		1180	1100	6. VLN reads 0-22d at THR.			
GS (kt)	80	120	150	180	210	DME VLN	ALT HGT
FAF-THR 5.4nm	4:03	2:42	2:10	1:48	1:33	6	1980
ROD (fpm)	3°	420	640	800	950	5	1660
						4	1340
						3	1020
						2	710
							630

# YEOVILTON

MIPS

# TAC Rwy 04