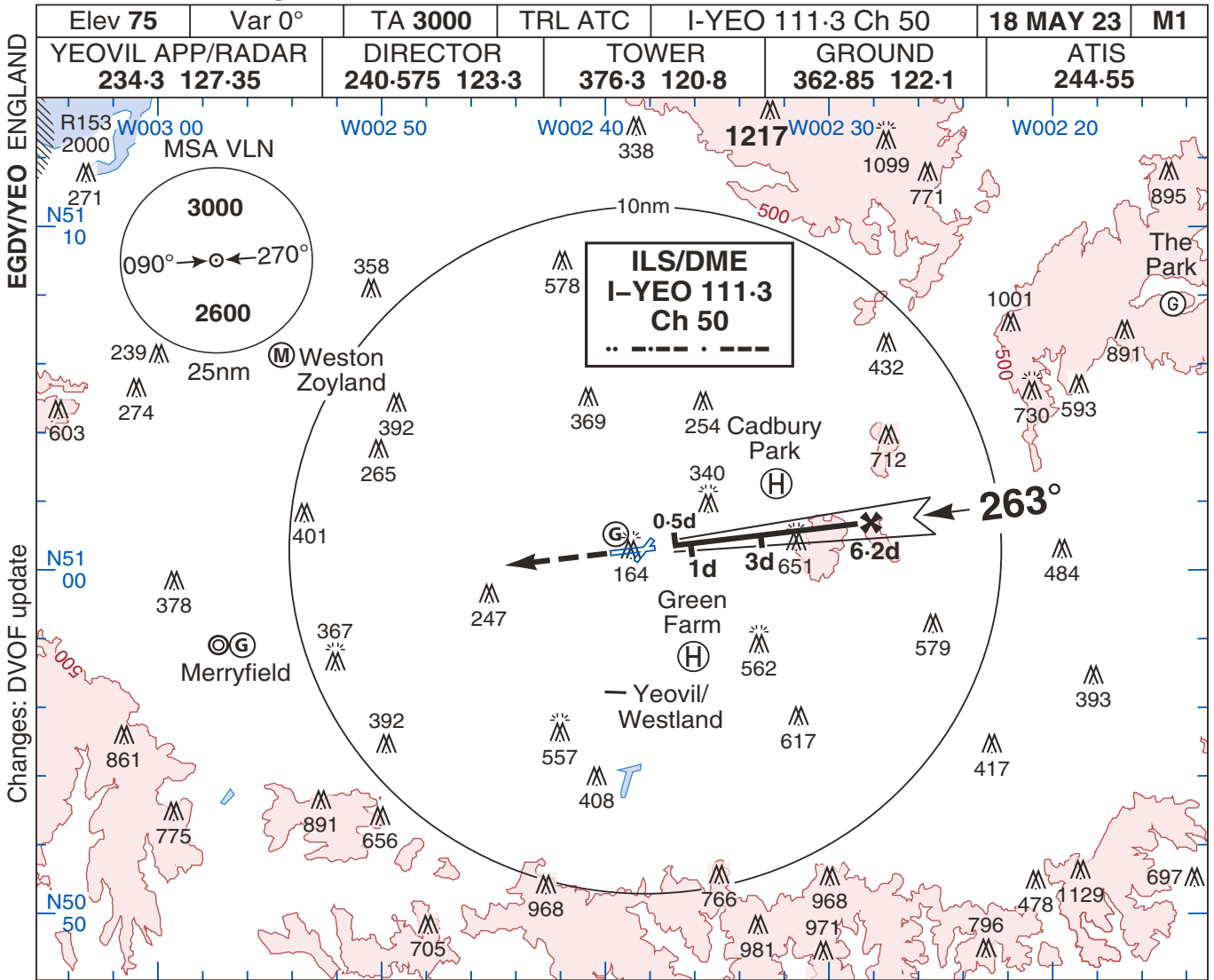


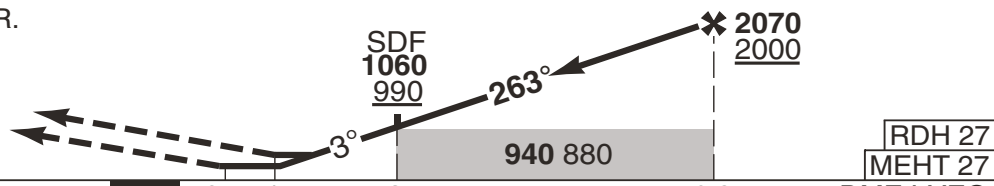
ILS/DME Rwy 26

YEOVILTON



Ahead on Rwy Tr to **3070 3000**; call RADAR.

MAPt Copter at 0.5d.
MAPt ABCDE at 1d.



Rwy QFU 263°
THR Elev 69/2hPa

CAT	ILS ①	LOC ②	CIRC				
A	270 200 1000m	470 400 1100m	620 540 1800m				
B			720 640 1800m				
C	280 210 1000m	470 400 1200m	1050 970 2400m				
D			1080 1000 3600m				
E			1180 1100 3600m				
GS (kt)		80	120	150	180	210	
FAF-MAPt 5.2nm		3:54	2:36	2:05	1:44	1:29	
ROD (fpm)		3°	420	640	800	950	1110

- When ALS inop increase ILS vis Cat ABCD by 200m, Cat E by 300m.
- When ALS inop increase LOC vis Cat AB by 700m, Cat CDE by 600m.
- DME I-YEO reads zero at THR.
- ILS users may experience erroneous indications or unlocks outside 17nm below 3000ft QFE.
- DME unlocks may occur beyond 21nm below 3000ft QFE. Aircrew could experience glidepath dropouts at 6° left of centreline.
- DME ident free-running and not correctly synchronised with localiser ident.

DME I-YEO	ALT HGT
6	2010 1950
5	1700 1630
4	1380 1310
3	1060 990
2	740 670

No 1 AIDU Last Amended 12 APR 23

YEOVILTON
MIPS

ILS/DME Rwy 26

© UK MOD Crown Copyright 2023. No 1 AIDU is not responsible for, and claims no right to, the content or accuracy of 3rd party documents/information.